

DRYING SOLUTION - ES SERIES

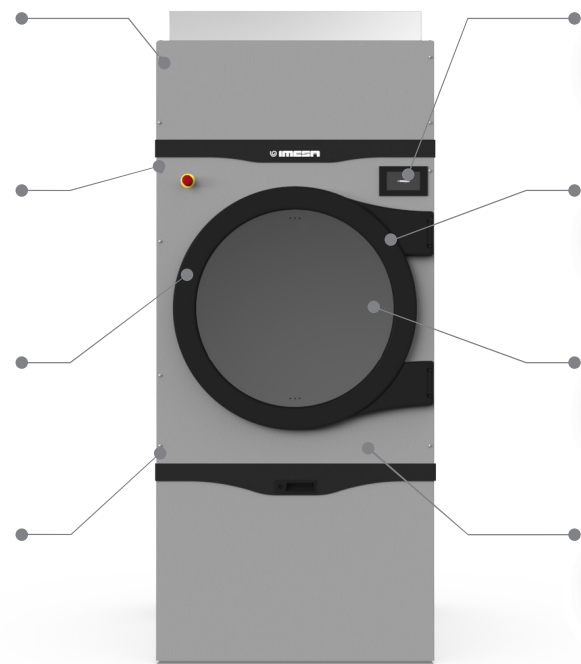
TUMBLE DRYERS ES 10 - 14 - 18 KG

Performance
Standard automatic drum rotation inversion.
Cycles with automatic humidity control.

Multi-step system
Optimal temperature management and greater sensitivity in the treatment of garments.

AISI 304 stainless steel drum
Without sharp edges for better conservation of linen.

Filter with high filtering power
Tear-proof and easy to clean filter with cleaning signaling on the display.



IM10: intuitive for easy interaction
Drying parameters can be modified after the cycle is started.

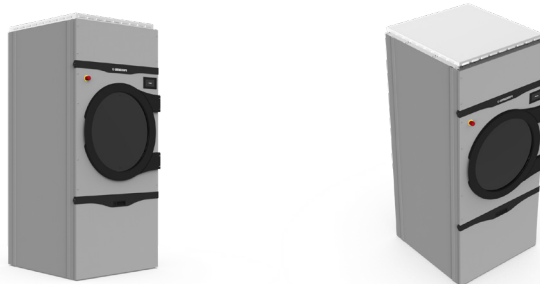
Refined aesthetics
Black plastics, gray paint and rusting treatment on dryers door.

Door with double glass
Double magnet closure.
Greater energy savings.

Cool down, anti-crease function
and smart air conveying inside the drum for perfect drying and easy ironing.



SCAN FOR MORE INFO



OPTIONS and ACCESSORIES

- DSC: Drum speed control
- FSC: Fan speed control (NOT available on GAS model)
- Working at partial or full power (for electric models ONLY)
- Left-hand door opening
- 3 front panels in AISI 304 stainless steel
- Central front panel in AISI 304 stainless steel
- Lint filter in AISI 304 stainless steel
- Stainless steel steam exchanger filter
- Stainless steel steam battery
- Payment systems for self-service use

TECHNICAL DATA

	ES 10	ES 14	ES 18
- Capacity 1:18 - 1:20	11 - 10 Kg (24-22 lb)	15 - 14 Kg (33-31 lb)	20 - 18 Kg (44 - 39.6 lb)
- Drum diameter Ø	756 mm (29.7 inch.)	756 mm (29.7 inch.)	756 mm (29.7 inch.)
- Drum depth	420 mm (16.5 inch.)	585 mm (23 inch.)	767 mm (30.2 inch.)
- Drum volume	189 lt	263 lt	345 lt
- Load diameter Ø	560 mm (22 inch.)	560 mm (22 inch.)	560 mm (22 inch.)
- Standard speed	38 r.p.m.	38 r.p.m.	38 r.p.m.
- Air sound intensity	61 dB (A)	61 dB (A)	61 dB (A)
- Heating leakage	15 %	15 %	15 %
- Vent air\smokes Ø	150 mm (5.9 inch.)	150 mm (5.9 inch.)	150 mm (5.9 inch.)
- Air flow	1200 m³/h (710 CFM)	1200 m³/h (710 CFM)	1200 m³/h (710 CFM)
- Max counterpressure	10 mt	10 mt	10 mt
- Machine dimension WxDxH (100 mm = 3.93 inch.)	791x707x1804 mm	791x874x1804 mm	791x1051x1804mm
- Net weight (electric \ gas \ steam)	203 \ 201 \ 207 Kg	217 \ 215 \ 221 Kg	233 \ 230 \ 234 Kg
- Packing dimension WxDxH (100 mm = 3.93 inch.)	840x740x1926 mm	840x890x1926 mm	840x1070x1926 mm
- Gross weight (electric \ gas \ steam)	210 \ 208 \ 214 Kg	225 \ 223 \ 229 Kg	245 \ 242 \ 246 Kg
- Packaging volume	1.17 m³ (41.3 ft³)	1.4 m³ (49.4 ft³)	1.7 m³ (60 ft³)
- Wooden cage WxDxH (100 mm = 3.93 inch.)	908x808x1934 mm	908x958x1934 mm	908x1138x1934 mm
- STD. packed machines in to 20' container	21 pz.	14 pz.	14 pz.
- STD. packed machines in to 40' container	44 pz.	28 pz.	28 pz.

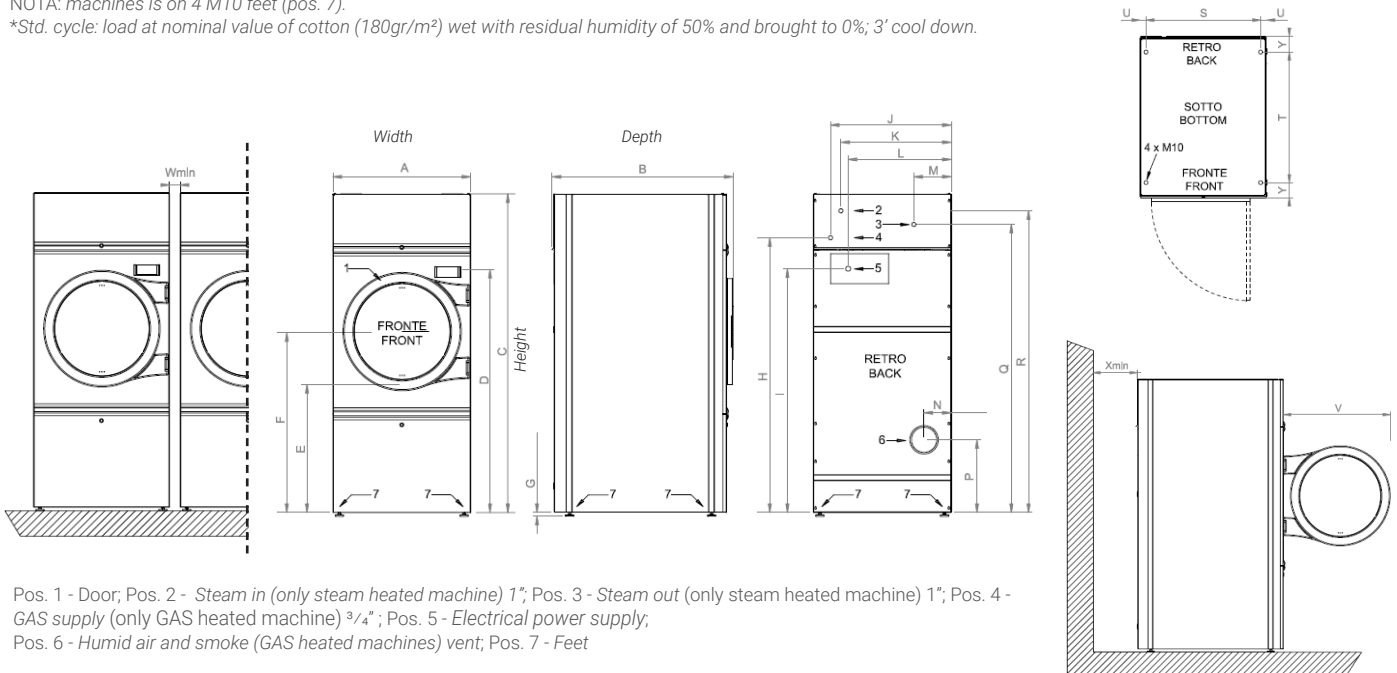
DATA BY TYPE OF HEATING

- Electrical Heating	18 kW	18 kW	24 kW
- Consumption*	6,7 kWh	9,3 kWh	11,9 kWh
- Electric absorption (50/60Hz)	18,7 kW	18,7 kW	24,7 kW
- 3ph380V-480V(+N) / 3ph220-240V / 1ph230V 50\60 Hz	27 / 48 / 82 A	27 / 48 / 82 A	35 / 62 / 106 A
- Cable section (100 mm = 3.93 inch.)	6 / 10 / 25 mm	6 / 10 / 25 mm	10 / 16 / 25 mm
- Steam heating consumption* (5 bar)**	26 Kg (57.3 lb)	36 Kg (79.3 lb)	46 Kg (101.4 lb)
- GAS heating consumption*	29,4 kW	29,4 kW	29,4 kW
- GAS heating consumption* (G20 - GPL\GLP)	0,7 m³ - 0,5 Kg	1 m³ - 0,7 Kg	1,2 m³ - 0,8 Kg
- Electric consumption*	0,2 kWh	0,2 kWh	0,2 kWh
- Electric absorption (50/60Hz)	0,7 kW	0,7 kW	0,7 kW
- 3ph380V-480V(+N) / 3ph220-240V / 1ph230V 50\60 Hz	1,5 / 3 / 4 A	1,5 / 3 / 4 A	1,5 / 3 / 4 A
- Cable section (100 mm = 3.93 inch.)	2,5 / 2,5 / 2,5 mm	2,5 / 2,5 / 2,5 mm	2,5 / 2,5 / 2,5 mm

NOTA: all technical data refers to reverse action machines.

NOTA: machines is on 4 M10 feet (pos. 7).

*Std. cycle: load at nominal value of cotton (180gr/m²) wet with residual humidity of 50% and brought to 0%; 3' cool down.



100 mm = 3.93 inch. - factor conversion 1 / 25,4

[mm]	A	B	C	D	E	F	G	H	I	J	K	L	M	N	P	Q	R	S	T	U	V	W _{min}	Y	X _{min}
ES 10	791	707	1804	1358	691	971	15±20	1508	1302	622	576	563	208	157	422	1576	1666	714	478	38,5	735	10	92	500
ES 14	791	874	1804	1358	691	971	15±20	1508	1302	622	576	563	208	157	422	1576	1666	714	654	38,5	735	10	92	500
ES 18	791	1051	1804	1358	691	971	15±20	1508	1302	622	576	563	208	157	422	1576	1666	714	831	38,5	735	10	92	500



imesa.it

Via degli Olmi 22 31040 Cessalto TV Italia - info@imesa.it

IMESA
designing your clean