

DRYING SOLUTION - ES SERIES

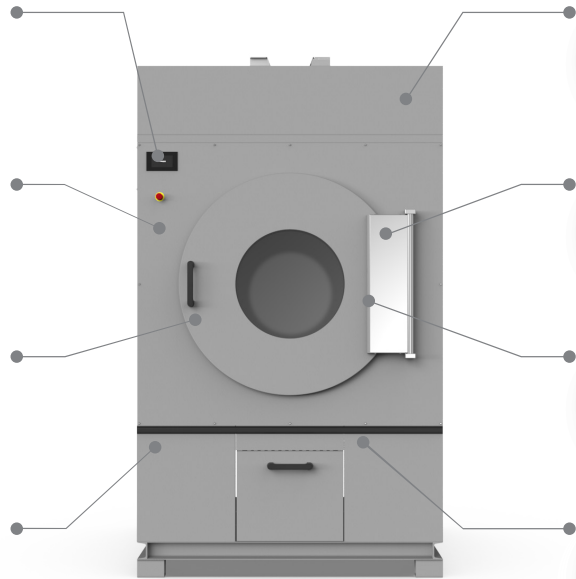
**TUMBLE DRYERS ES 55 - 75 KG\***

**IM10: intuitive for easy interaction**  
Drying parameters can be modified after the cycle is started.

**Multi-step system**  
Optimal temperature management and greater sensitivity in the treatment of garments.

**Large door**  
with double glass and opening at 180°.

**Cool down, anti-crease function**  
and smart air conveying inside the drum for perfect drying and easy ironing.



**Performance**  
Standard automatic drum rotation inversion.  
Cycles with automatic humidity control.

**Efficient insulation**  
Drying chamber insulated thermally and acoustically.

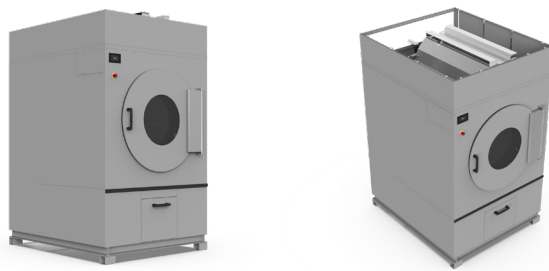
**AISI 304 stainless steel drum**  
Without sharp edges for better conservation of linen.

**Filter with high filtering power**  
easy to clean filter with cleaning signaling at display.

*\*The "Steam" and "Tilting" version require compressed air*



SCAN FOR MORE INFO



**OPTIONS and ACCESSORIES**

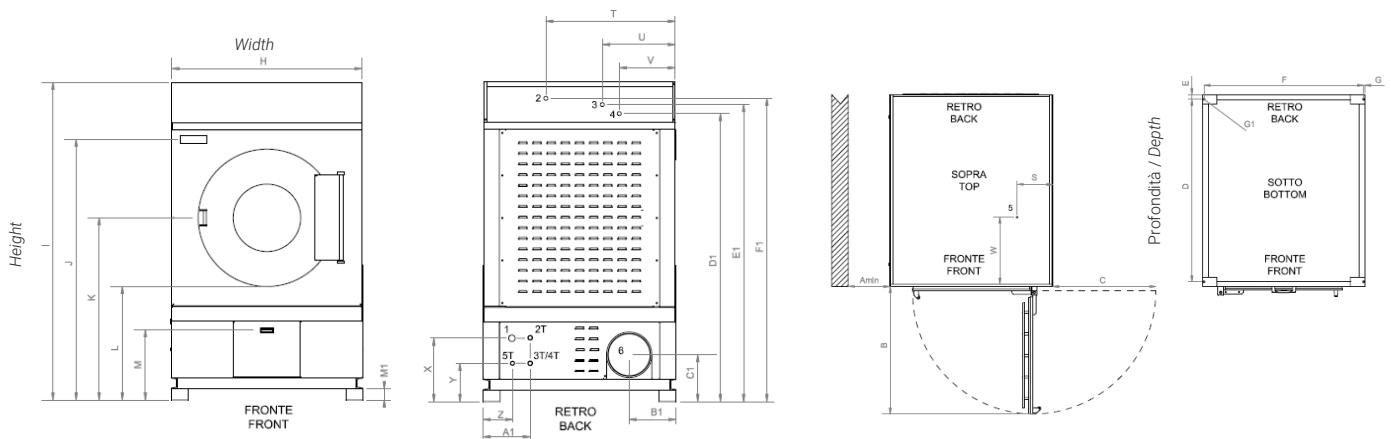
- Available tilting system for laundry loading and unloading
- FSC: Fan speed control (NOT available on GAS model)
- Working at partial or full power (for electric models ONLY)
- 3 front panels in AISI 304 stainless steel
- Central front panel in AISI 304 stainless steel
- Lint filter in AISI 304 stainless steel
- Stainless steel steam exchanger filter
- Stainless steel steam battery

TECHNICAL DATA	ES 55	ES 75
- Capacity 1:18 - 1:20	60 - 55 Kg (132 - 121 lb)	80 - 75 Kg (176 - 165 lb)
- Drum diameter Ø	1202 mm (47.3 inch.)	1202 mm (47.3 inch.)
- Drum depth	960 mm (37.8 inch.)	1310 mm (51.6 inch.)
- Drum volume	1086 lt	1486 lt
- Load diameter Ø	890 mm (35 inch.)	890 mm (35 inch.)
- Standard speed	25 r.p.m.	25 r.p.m.
- Air sound intensity	74 dB (A)	74 dB (A)
- Heating leakage	15 %	15 %
- Vent air\smokes Ø	300 mm (11,8 inch.)	300 mm (11,8 inch.)
- Air flow	1980 m³/h	1980 m³/h
- Max counterpressure	10 mt	10 mt
- Compressed air in Ø (pos. 5)	6 mm (0.23 inch.)	6 mm (0.23 inch.)
- Compressed air consumption (steam machine)	5 l/h	5 l/h
- Machine dimension WxDxH (100 mm = 3.93 inch.)	1360x1700x2260 mm	1360x1930x2260mm
- Net weight (electric \ gas \ steam)	813 \ 827 \ 806 Kg	957 \ 971 \ 972 Kg
- Packing dimension WxDxH (100 mm = 3.93 inch.)	1540x1700x2422 mm	1540x2050x2422 mm
- Height without pallet (for container) (100 mm = 3.93 inch.)	2272 mm	2272 mm
- Gross weight (electric \ gas \ steam)	882 \ 896 \ 875 Kg	1021 \ 1035 \ 1036 Kg
- Volume whit pallet - without pallet	6,3 - 5,9 m³	7,6 - 7,1 m³
- STD. packed machines in to 20' container	3 pz.	3 pz.
- STD. packed machines in to 40' container	7 pz.	7 pz.

ELECTRIC HEATING MACHINE DATA		
- Electrical Heating	58,5 kW	97,5 kW
- Consumption*	35,8 kWh	48,8 kWh
- Electric absorption (50/60Hz)	60,7 kW	100,5 kW
- 3ph380V-480V(+N) / 3ph220-240V / 1ph230V 50\60 Hz	88 / 152 / - A	148 / 256 / - A
- Cable section (100 mm = 3.93 inch.)	16 / 35 / - mm²	35 / 50 / - mm²
- Steam heating consumption* (5 bar)**	71 Kg ( 156.5 lb)	97 Kg ( 213,8 lb)
- GAS heating consumption* (kW)	105 kW	135 G20/110 G25/140 G30/31
- GAS heating consumption* (G20 - GPL\GLP)	3,8 m³ - 2,6 Kg	5,2 m³ - 3,5 Kg
- Electric consumption*	0,7 kWh	1 kWh
- Electric absorption (50/60Hz)	2,2 kW	3 kW
- 3ph380V-480V(+N) / 3ph220-240V / 1ph230V 50\60 Hz	2,8 / 4,8 / 8,4 A	4 / 7 / 9,5 A
- Cable section (100 mm = 3.93 inch.)	2,5 / 2,5 / 2,5 mm²	2,5 / 2,5 / 2,5 mm²

NOTE: machine is on 4 basis (pos. 7) with Ø 13 mm holes.

\*Std. cycle: load at nominal value of cotton (180gr/m²) wet with residual humidity of 50% and brought to 0%; 3' cooldown.



Pos. 1 - Electrical connection; Pos. 2 - Steam supply (only steam heated machine) ES 55 1 1/4" ES 75 1 1/2"; Pos. 3 - Steam condense (only steam heated machine) ES 55 1" ES 75 1 1/4"; Pos. 4 - GAS supply (only GAS heated machine) 1 1/4"; Pos. 5 - Compressed air; Pos. 6 - Vent air, smoke; Pos. 7 - Electrical power supply.

100 mm = 3.93 inch. - factor conversion 1 / 25,4

	[mm]	A <sub>min</sub>	B	C	D	E	F	G	H	I	J	K	L	M	M1	Q	S	T	U	V	W	X	B1	C1	D1	E1	F1	G1
<b>ES 55</b>		500	1063	858	1520	40	1330	10	1360	2260	1850	1295	807	500	80	1700	220	913	514	395	570	359	330	330	2032	2095	2139	Ø 13
<b>ES 75</b>		500	1063	858	1870	40	1340	10	1360	2260	1850	1295	807	500	80	1930	220	913	514	395	570	359	330	330	2032	2095	2139	Ø 13